

100~300μJ Erbium-doped glass laser

SKU :ER1535-300

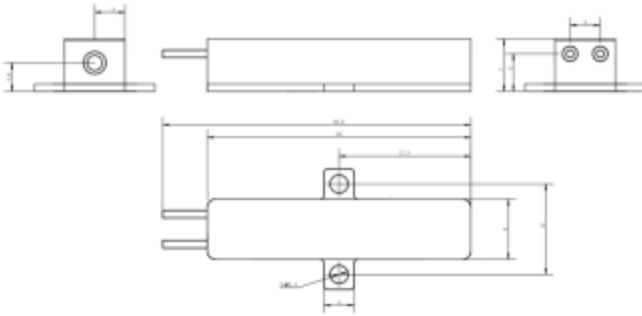
**OVERVIEW**

The erbium glass laser emits at a eye-safe wavelength of 1.54μm and offers high beam quality within the atmospheric window. With a pulse energy of 100-300μJ, it is suitable for eye-safe laser ranging. This laser exhibits low power consumption, high peak power, narrow pulse width, compact size, and does not require temperature control. It has been proven to be a safe, efficient, and stable eye-safe laser solution.

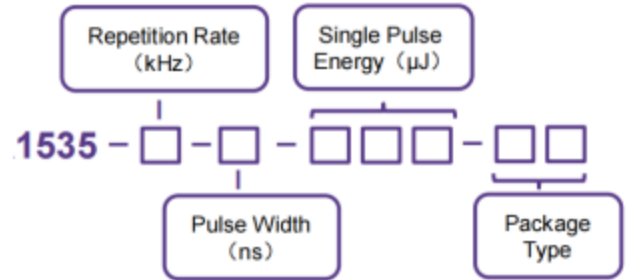
**TECHNICAL SPECIFICATIONS**

Wavelength	1535 nm	1535 nm	1535 nm
Pulse energy (Min./Typ.)	≥100 μJ	≥200 μJ	≥300 μJ
Pulse width, Typ.(FWHM)	3 . 5 ns	3.5 ns	3.5 ns
Pulse repetition rate	1~20 Hz	1~10 Hz	1~20 Hz
Pulse stability	10%	10%	10%
Spots diameter	0 . 2 mm	0.2 mm	0.2 mm
Beam divergence angle	10 mrad	10 mrad	10 mrad
Spots mode	TEM00	TEM00	TEM00
Operating temperature	-45 °C~+65 °C	-45 °C~+65 °C	-45 °C~+65 °C
Storage temperature	-55 °C~+85 °C	-55 °C~+85 °C	-55 °C~+85 °C
Impact	1500 G, 0 . 5 ms	1500 G, 0.5 ms	1500 G, 0.5 ms
Vibration	20~2000 Hz/20 G	20~2000 Hz/20 G	20~2000 Hz/20 G
Life span	>50 million shots	>50 million shots	>50 million shots
Dimension (mm)	25x8x7	25x8x7	25x8x7
Weight	8 g	8 g	8g
Voltage	2 V	2 V	2 V
Current	6 A	12 A	12 A
Pulse width	≥2 ms	≥1.8 ms	≥2.5 ms

▶ MECHANICAL DIMENSION(mm)

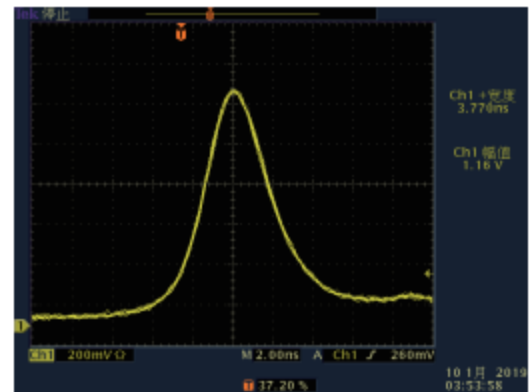


▶ PART NUMBERING SCHEMA

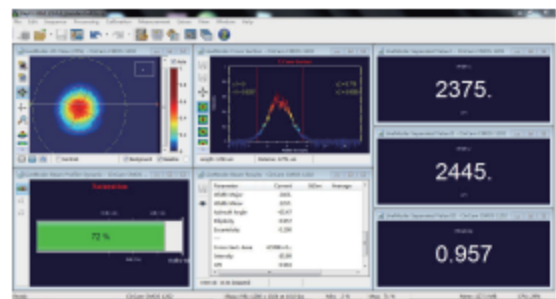


▶ PIN DESCRIPTIONS

Pin	Function
1	Laser (+)
2	Laser (-)



Typical Pluse



Beam Profile

