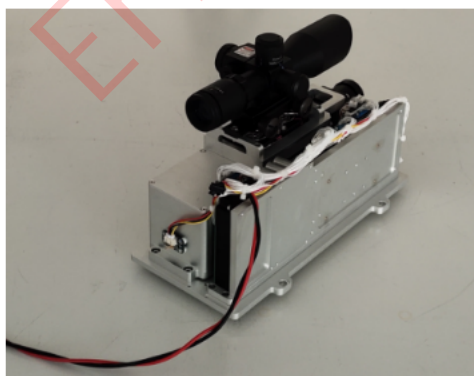


1064nm Laser range finder-80



product description

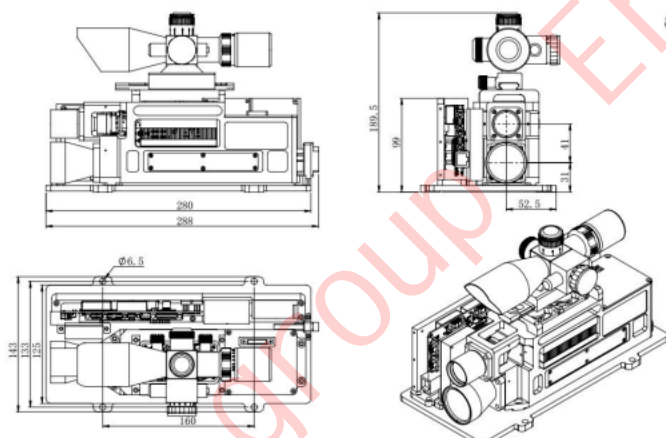
High energy diode pumped all solid state Q-switched laser at 1064nm has the features of high single pulse energy, short pulse duration, and high peak power, which is widely used in laser ranging, scientific research, and so on.

SPECIFICATIONS

Model	LRF-1064-80	
Wavelength (nm)	1064±1	
Operating mode	Q-switched: EO (Electro-optic)	
Single pulse energy (mJ)	50	80
Pulse duration (ns)	<10	
Rep. rate (Hz)	20	
Energy stability (std dev/mean)	<3%	
Beam divergence, full angle (mrad)	≤0.5	
Beam diameter (mm)	~30	
Warm-up time (minutes)	<15	
Beam height from base plate (mm)	31	
Ranging accuracy(m)	±2m	
Laser ranging distance	150m-10km	150m-20km
Cooled method	Air cooled	
Operating temperature (°C)	40~60	
Power supply	24V DC	
Expected lifetime (pulses)	5×10 ⁷	
Warranty period	1 year	



structure size



288(L)×143(W)×99(H)mm³, 4.0 kg