

40μJ High refrequency erbium-doped glass laser

SKU :ER1535-40

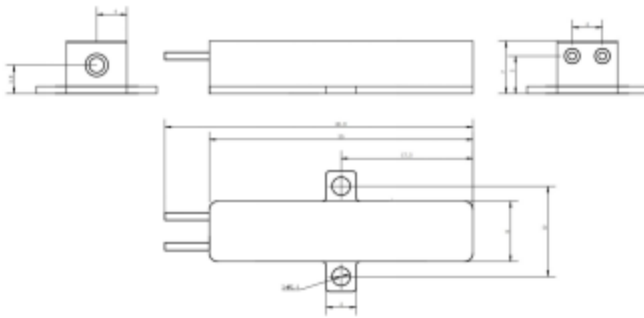
**OVERVIEW**

The Erbium glass laser operates at a wavelength of 1.54 μm with a repetition rate of 1 kHz. It is classified as Class 1 eye-safe, ensuring a safe working environment. It has a small size, lightweight design, and high reliability. With high optical-to-electrical conversion efficiency, it delivers outstanding performance and can operate in harsh working conditions.

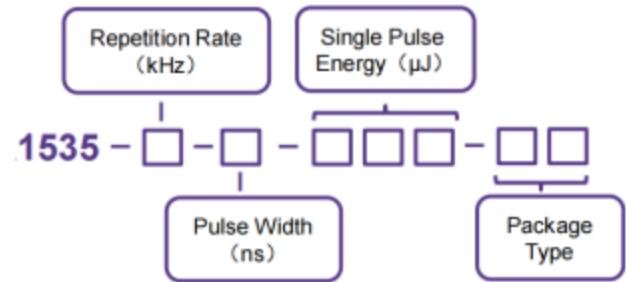
**TECHNICAL SPECIFICATIONS**

Wavelength	1535 nm
Pulse energy (Min./Typ.)	≥40 μJ
Pulse width, Typ.(FWHM)	4 ns
Pulse repetition rate	1KHz
Pulse stability	10%
Spots diameter	0.2 mm
Beam divergence angle	<15 mrad
Spots mode	TEM00
Operating temperature	-45 °C~+65 °C
Storage temperature	-55 °C~+85 °C
Impact	1500 G, 0.5 ms
Vibration	20~2000 Hz/20 G
Life span	>50 million shots
Dimension (mm)	25x8x7
Weight	8 g
Voltage	2 V
Current	5A
Pulse width	≥0.3 ms

MECHANICAL DIMENSION (mm)

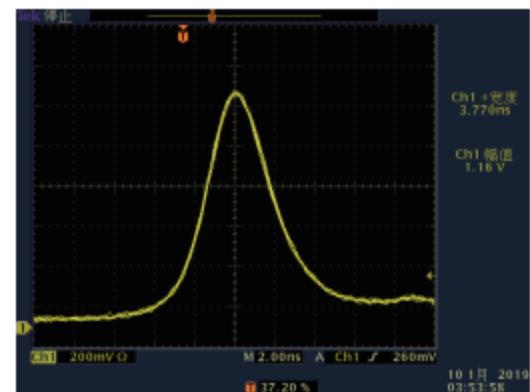


PART NUMBERING SCHEMA

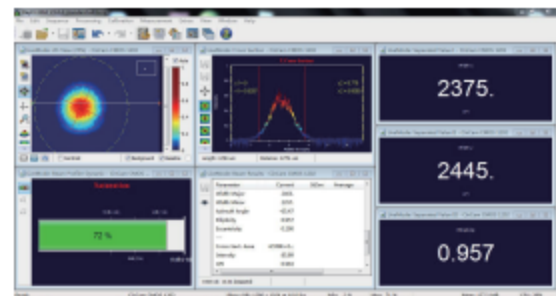


PIN DESCRIPTIONS

Pin	Function
1	Laser (+)
2	Laser (-)



Typical Pulse



Beam Profile

