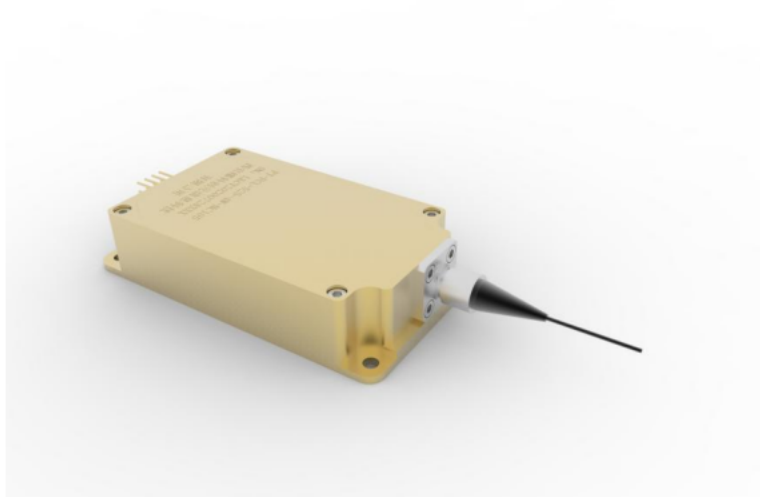


## 525nm Green Laser-4W-B



### Features:

1. Working temperature -40~65 degrees
2. The minimum fiber core diameter is 62.5um
3. Small size

### Use:

1. Dazzling
2. Laser pointer

**PIC 2-1**

Semiconductor laser components are high-power, high-efficiency, and high-stability products made with professional coupling technology. The product concentrates the light emitted by the chip into an optical fiber with a small core diameter through micro-optical components for output. In this process, every important process is inspected and aged to ensure the reliability, stability and long life of the product.

In production, the researchers continuously improve the product process through professional technology and long-term accumulated experience to ensure the high performance of the product. The company also continues to develop new products to meet the ever-increasing demands of customers. The interests of customers have always been put in the first place, and providing customers with high-quality, cost-effective products is the company's consistent goal.

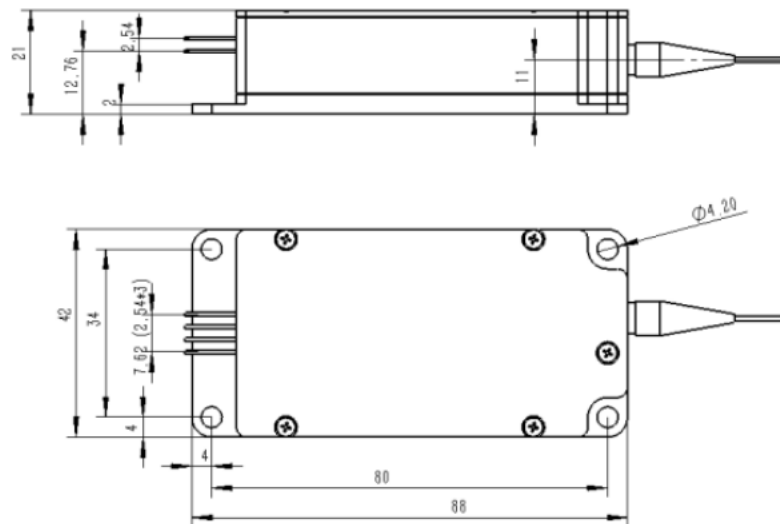
Typical Product Specifications(25°C)		symbol	Unit	BDT-B525-W4		
				Min.	Typical value	Max. Value
Optical parameters	Output Power	P <sub>o</sub>	W	4	-	custom izable200 W
	Center wavelength	c	nm	520±10		
	Spectral width(FWHM)	Δ	nm	6		



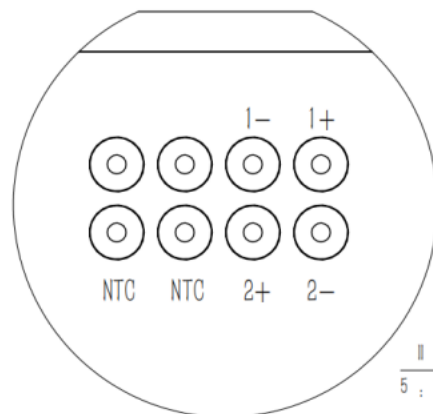
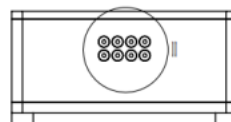
	Temperature Drift Coefficient	$\Delta / \Delta T$	nm/°C	-	0.06	-
	Current drift coefficient	$\Delta / \Delta A$	nm/A	-	/	-
<b>Electrical parameters</b>	Electro-optical efficiency	PE	%	-	10	-
	Working current	$I_{op}$	A	-	1.8	2
	Threshold current	$I_{th}$	A	0.2	0.3	0.5
	Operating Voltage <sup>(1)</sup>	$V_{op}$	V	-	9	11
	Slope efficiency	$\eta$	W/A	-	2.5	-
<b>Fiber parameters</b>	Fiber Core Diameter	$D_{core}$	$\mu m$	62.5	105	-
	Cladding Diameter	$D_{clad}$	$\mu m$	-	125	-
	Coating Diameter	$D_{buf}$	$\mu m$	-	245	-
	Numerical aperture	NA	-	-	0.22	-
	Fiber length	$L_f$	m	-	2	-
	Fiber Cover Diameter/Length	-	mm	0.9mm/2m		
	Bending radius	-	mm	62.5	105	-
	Connector	-	-	-	FC/PC or SMA905	-
<b>others</b>	Weight		g			240
	ESD	$V_{esd}$	V	-	-	500
	storage temperature <sup>(2)</sup>	$T_{st}$	°C	-40	-	80
	Soldering temperature	$T_{ls}$	°C	-	-	260
	Welding time	t	sec	-	-	10
	Operating temperature <sup>(3)</sup>	$T_{op}$	°C	-40	-	65
	Relative humidity	RH	%	15	-	75

NOTE:

- 【1】 There are a total of 4 semiconductor laser tubes inside the laser, each of which is connected in series to form a road, a total of two strings.
- 【2】 Please store in a non-condensing environment
- 【3】 The working temperature of the laser refers to the temperature of the base plate. The laser can work in the environment of -40~+65 degrees, but the output power will be different at different temperatures. Generally speaking, the output power of the laser is greater than 70% of the nominal value at 65 degrees.



### Green Light Dimensions



### Instructions for use

When the laser is working, avoid laser exposure to eyes and skin. Anti-static measures must be taken during transportation, storage and use. Short-circuit protection is required between pins during transportation and storage. For lasers with a working current of more than 6A, please use welding to connect the leads. Before operating the laser, make sure that the fiber output end is properly cleaned. Follow safety protocols to avoid injury when handling and cutting fibers. Use constant current power supply to avoid surge when working. Should be used at rated current and rated power. When the laser is working, it is necessary to ensure good heat dissipation. Operating temperature-40°C~ 65°C. storage temperature—20°C~+80°C.

