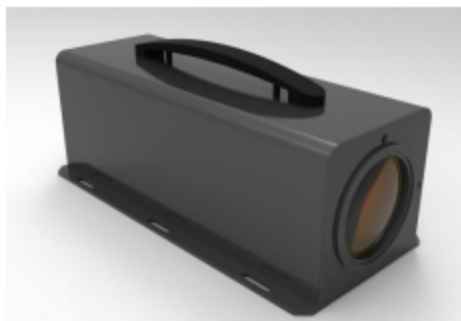


## Detection and calibration light source

SKU:DOE1064-1550



This detection and calibration light source adopts a unique laser peak power attenuation technology, which can accurately attenuate the output laser power, and realize continuous adjustment of the full power segment; real-time adjustment of laser pulse width, repetition frequency and other parameters. The output spot uses a homogenized optical system to achieve flat-top light output, and the uniformity of the spot is better than 10%. The calibration light source of this model is available in two bands of 1064nm and 1550nm.

Main purposes: APD, PIN detector characteristic calibration, four-quadrant detector uniformity calibration.

### TECHNICAL PARAMETERS

Laser wavelength	1064nm or 1550nm
Laser pulse width	10 ~ 20ns
Output spot size	80mm
Spot Uniformity	Better than 15%
Repeat frequency	Single trigger ~ 1kHz
Minimum output peak power density	$\leq 1 \times 10^{-7} \text{ w/cm}^2$
Power Density Dynamic Range	> 60dB