

# FS300-70 Optical Fiber Integrated Navigation System

SKU :FS300-70

## PRODUCT DESCRIPTION

The FS300-70 fiber optic integrated navigation system is based on a cost-effective closed-loop fiber optic gyroscope, accelerometer, and high-end GNSS receiving board. It is achieved through multi-sensor fusion and navigation solution algorithms. This system can meet the requirements of accurate measurement of attitude, heading, and position information in medium to high precision mobile measurement systems, large unmanned aerial vehicles, and other applications.



## MAIN FUNCTION

The system features a combined inertial/satellite navigation mode as well as a pure inertial mode.

In the integrated inertial/satellite navigation mode, the GNSS receiver captures satellite positioning information which can be utilized for integrated navigation. This mode outputs carrier pitch, roll, heading, position, speed, and time information. In the event of a signal loss, the inertia-calculated position, velocity and attitude are output. The pitch and roll require precise calibration with a short-term course holding function and can achieve meter-level positioning accuracy within a short time.

The pure inertial mode (that is, GPS fusion has never been carried out after power-on, and if it loses lock again after fusion, it belongs to integrated navigation mode) possesses an accurate attitude measurement function and can output pitch, roll, and heading. Pure inertia can perform static north searching.

## PERFORMANCE INDEX

Parameter		Technical index
Position accuracy	Single point (RMS)	1.2m
	RTK (RMS)	2cm+1ppm
	Post-processing (RMS)	1cm+1ppm
	Loss of lock accuracy (CEP)	10m, lose lock 30s (Alignment efficiency)
Course (RMS)	Single antenna	0.1° (Vehicle conditions, need to maneuver)
	Double antenna	0.1° (baseline $\geq 2m$ )
	post-processing	0.02°
	Loss of lock hold accuracy	0.5°, lose lock for 30 minutes
	Self-seeking north accuracy	At 1°SecL, align for 15min (Double position alignment, course difference between the two positions is greater than 90

		degrees)
Attitude (RMS)	Single antenna	0.02°
	Double antenna	0.02°
	post-processing	0.015°
	Loss of lock hold accuracy	0.5°, lose lock for 30 minutes
Horizontal velocity accurac (RMS)	0.05m/s	
Timing accuracy	20ns	
Data output frequency	200Hz (Single output 200Hz)	
Gyroscope	Range	400°/s
	Zero bias stability	0.3°/h (10s average)
	Scale factor	100ppm
	Nonlinearity	
	Angular random walk	0.05°/√hr
Accelerometer	Range	16g
	Zero bias stability	50ug (10s average)
	Scale factor	100ppm
	Nonlinearity	
	Velocity random walk	0.01m/s/√hr
Physical dimensions and electrical characteristics	Overall dimension	138.5 mm×136.5 mm×102mm
	Weight	<2.7kg (excluding cable)
	Input voltage	12~36VDC
	Power consumption	<24W (steady state)
	Storage	Rreserve
Environmental index	Operating temperature	-40°C~+60°C
	Storage temperature	-45°C~+70°C
	Random vibration	6.06g, 20Hz~2000Hz
	MTBF	30000h
Interface characteristic	PPS, EVENT, RS232, RS422, CAN (Optional)	
	Network port (Reserved)	
	Antenna interface	
	Wheel speed sensor interface	

## OVERALL DIMENSION

The inertial measurement unit and the satellite receiver are integrated into the inertial guidance system, and the system shape is shown in the figure below.

The system form factor is 138.5 mm × 136.5 mm × 102 mm (L × W × H).

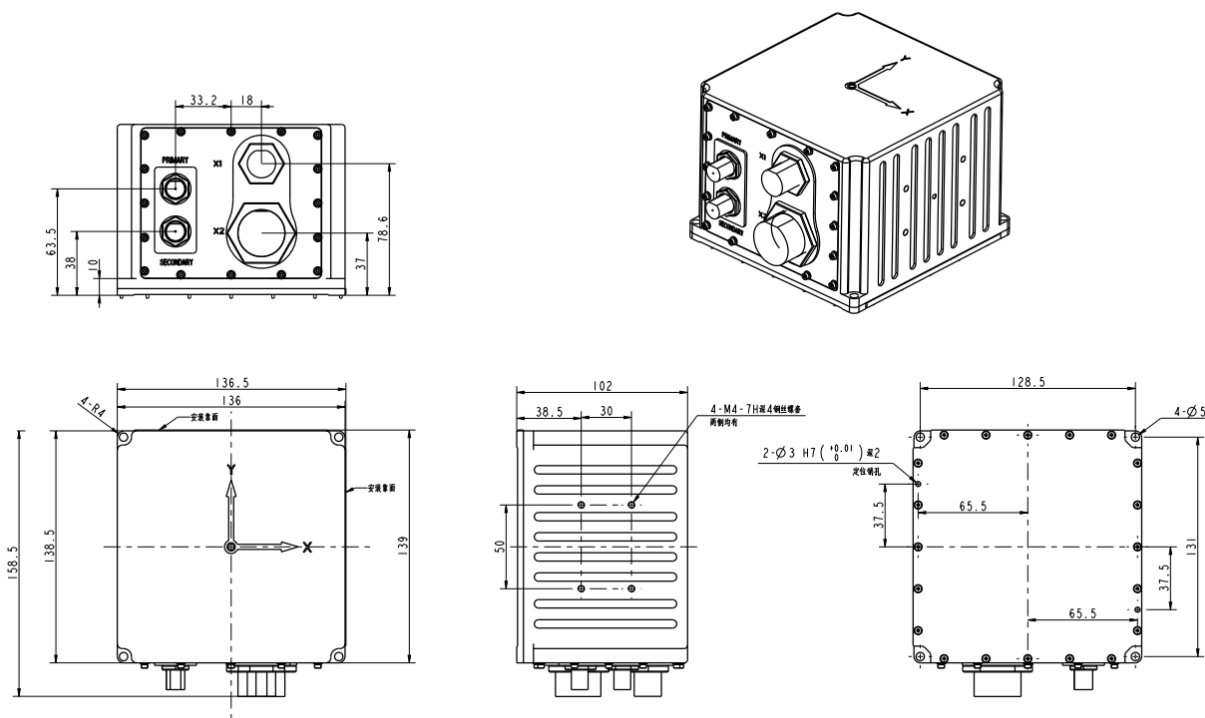


Figure 3 Outline structure diagram

## WORKING PRINCIPLE

### Product Composition

The composition of the product is as follows Figure 1.

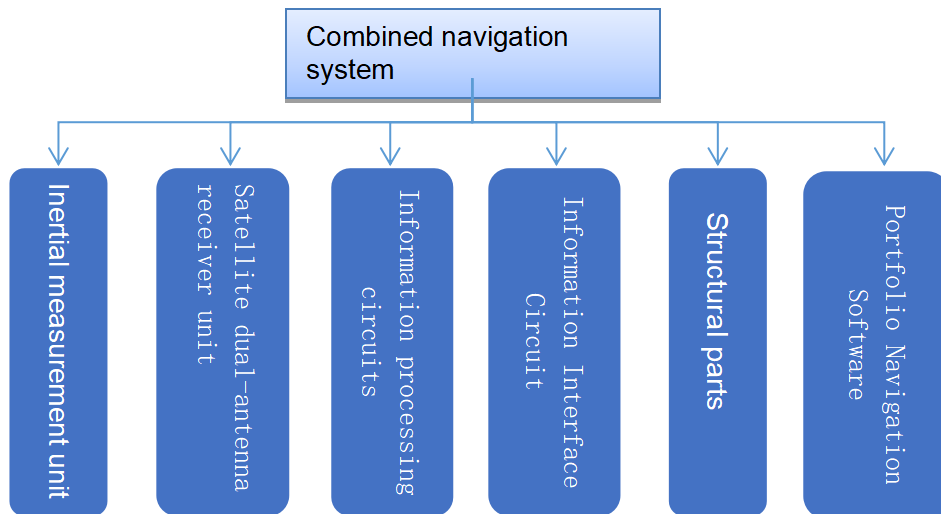


Figure 1 System Composition

### Fundamentals

The inertial measurement unit consists of three accelerometers and three fiber optic gyroscopes, which are responsible for measuring the acceleration and angular velocity of the carrier and sending this information to the information processing circuit. The information processing circuit uses the acceleration and angular velocity measured by the inertial measurement unit for navigation settlement, and also receives satellite navigation

information from the satellite receiver as a reference for combined navigation, corrects the navigation error of the inertial guidance, and outputs the navigation information through the information interface unit.

The basic principle is shown in the following figure:

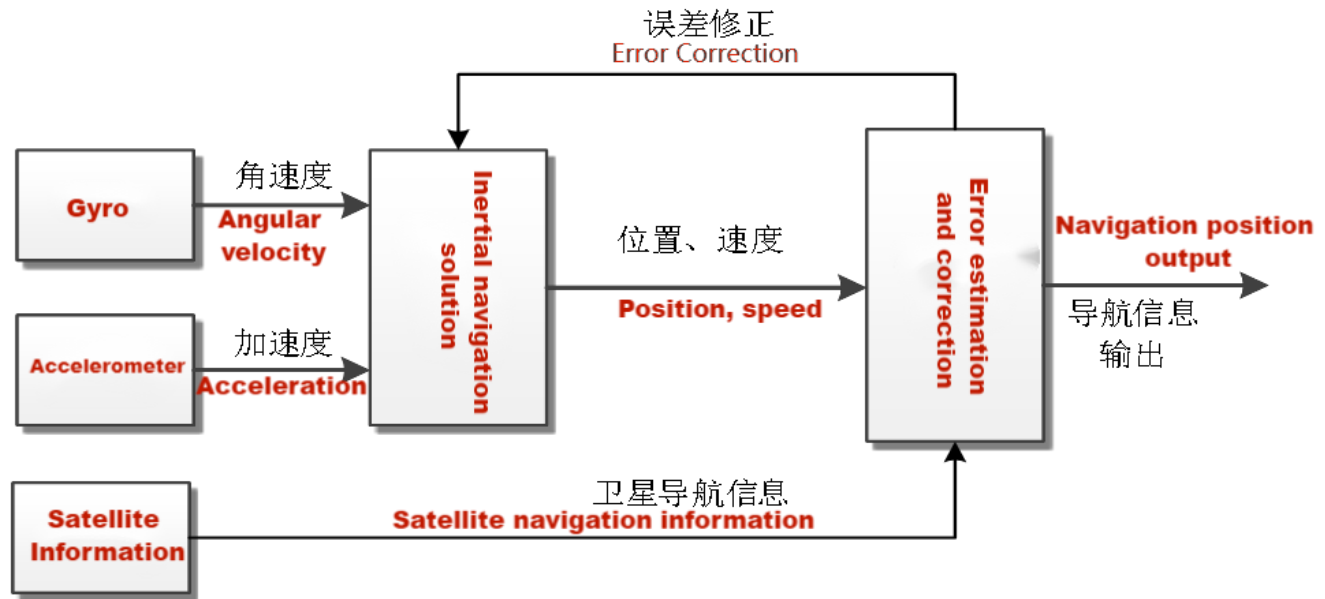


Figure 2 schematic diagram of working principle

## ELECTRICAL INTERFACE

The system has 4 external connectors:

- One X1 power supply port, X2 communication interface
- Two RF line interface (TNC outer screw inner hole, which is connected to the upper master antenna, the lower slave antenna)
- 1 power cable connected to X1 at one end and 13~36V DC at the other end;
- A communication cable one end to X2, the other end is divided into five serial ports, respectively COM2 ~ COM5, where COM5 for RS232, COM2, COM3, COM4 for RS232, RS422 can be configured. COM2 can be used to send work mode command, COM5 can be configured inertial guide internal GNSS board;

External connector points are defined as shown in Tables 1 and 2:

Table 2 X1 connector point definition

X1(J599/26FA35SA)	Signal Definition	Plug wire label code	Remarks
1	DC+	Red alligator clip, large	Power supply positive
2	DC+		
3	DC+		
4	DC-	Black Alligator Clips, Large	Power supply negative
5	DC-		
6	DC-		

Table 3 X2 Connector Point Definition

X2(J599/26FD35PA)	Signal Definition	Plug wire label code	Terminal number	Remarks
1	COM2_TXD_RS232	COM1(DB9 female)	1-DB9 hole: 2	Main processor program upgrade port, RS232
2	COM2_RXD_RS232		1-DB9 hole: 3	
3	GND		1-DB9 hole: 5	
4	COMA_422T_N/RS232_T	COM2(DB9 female)	2-DB9 hole: 2	The first road can be configured serial port RS422/RS232 Default RS232
5	COMA_422T_P		2-DB9 hole: 6	
6	COMA_422R_N		2-DB9 hole: 8	
7	COMA_422R_P/RS232_R		2-DB9 hole: 3	
8	GND		2-DB9 hole: 5	
9	COMB_422T_N/RS232_T	COM3(DB9 female)	3-DB9 hole: 4	The second channel can be configured with serial port RS422/RS232 Default RS422
10	COMB_422T_P		3-DB9 hole: 3	
11	COMB_422R_N		3-DB9 hole: 2	
12	COMB_422R_P/RS232_R		3-DB9 hole: 1	
13	GND		3-DB9 hole: 5	
14	COMC_422T_N/RS232_T	COM4(DB9 female)	4-DB9 hole: 4	The third channel can be configured serial port RS422/RS232 Default RS422
15	COMC_422T_P		4-DB9 hole: 3	
16	COMC_422R_N		4-DB9 hole: 2	
17	COMC_422R_P/RS232_R		4-DB9 hole: 1	
18	GND		4-DB9 hole: 5	
19	RS232-718-TXD1	COM5(DB9 female)	5-DB9 hole: 2	718D serial port 1
20	RS232-718-RXD1		5-DB9 hole: 3	
21	GND		5-DB9 hole: 5	
22	PPS	No Plug, Dump Cable	PPS	3.3V TTL
23	EVENT2	No Plug, Dump Cable	EVENT2	3.3V TTL
24	CAN1_P	No Plug, Dump Cable	CAN1_P	CAN
25	CAN1_N	No Plug, Dump Cable	CAN1_N	
26	DI1+	No Plug, Dump Cable	DI1+	First circuit odometer (5V-12V)
27	DI1-	No Plug, Dump Cable	DI1-	
28	DI2+	No Plug, Dump Cable	DI2+	Second odometer (5V-12V)
29	DI2-	No Plug, Dump Cable	DI2-	
30	GND	No Plug, Dump Cable	GND	

31	ETHER_TX_P (3 green-white)	Network port (RJ45)	1 (orange and white)	10/100 Ethernet interface
32	ETHER_TX_N (6 green)		2 (Orange)	
33	ETHER_RX_P (1 orange-white)		3 (Green-white)	
34	ETHER_RX_N (2 Orange)		6 (Green)	
35	CAN2_P	Plugless, Dump Cable	CAN2_P	CAN
36	CAN2_N	Unplugged, Dump Cable	CAN2_N	
37	-	-	-	-

## INSTRUCTIONS FOR USE

### 1、System workflow

The inertial guidance system consists of two workflows, a combined navigation process and a pure inertial navigation process.

#### 1.1、Start-up prompt message

Connect the cable, power up the system, monitor the COM1 interface information through the serial debugging tool of the test computer, and send workflow commands to the COM1 interface through the serial debugging tool after the interface displays "Please enter NaviMode within 20s! "If the command is not sent within 20s, the system will automatically enter the internal saved workflow after 20s.

#### 1.2、Portfolio navigation process

After entering the combined navigation process, the first binding satellite information, if the satellite does not position, it is in the state of waiting for satellite information; when the satellite information is valid, it enters the alignment state, alignment time 1min, alignment period requires the inertial guide stationary, alignment is complete, the inertial guide can move, the system is in the combined navigation state.

#### 1.3、Pure inertial navigation process

After entering the pure inertial navigation process, the first 1min coarse alignment, if the satellite information is valid, the binding satellite information for 1500s fine alignment, if there is no satellite information, the static base must be aligned 1500s; alignment is completed after the transfer to the pure inertial navigation state, the inertial guidance can move.

### 2、System configuration commands

#### 2.1 、Configuration scheme and save

The inertial guidance system provides 4 serial ports (configuration number: com2~com5) externally, and provides one internal storage channel (configuration number: file), each serial port function assignment and related configuration are as follows.

Table 4 Inertial guidance system serial port function assignment table

Configuration number	Input Items	Output items	Default
COM2	1. working mode commands and process control commands; 2. COM2~COM4 baud rate configuration; 3. COM2~COM4 protocol and update rate configuration;	1.SNCNAVPVTB (0.2Hz, 1Hz, 5Hz, 10Hz, 20Hz, etc.); 2.GPFPD (0.2Hz, 1Hz, 5Hz, 10Hz, 20Hz, etc.); 3. BDFPD (0.2Hz, 1Hz, 5Hz, 10Hz, 20Hz, etc.); 4. INSPVASA (0.2Hz, 1Hz, 5Hz, 10Hz, 20Hz, etc.); 5. INSPBASB (0.2Hz, 1Hz, 5Hz, 10Hz, 20Hz, etc.);	RS232; 460800bps; Output: INSPVASA 1Hz;

	4. Storage file port protocol configuration.	6. RAWIMUSB (fixed 200Hz SPAN-ISA-100C format); 7. RAWDATA (RAWIMUSB in fixed 200Hz SPAN-ISA-100C format and containing data sent from satellite board COM2); 8. configuration prompt messages;	
COM3	None	Same as COM2	RS422; 460800bps; Output: None
COM4	None	1. Same as COM2 2. Can be configured to connect directly to COM3 port of 718D board	RS422; 460800bps; Output: None
COM5	OEM718D COM1 configuration items;	Configure outputs according to this interface, such as BESTPOSA, GPRMC, etc.	RS232; 9600bps; Output: None
file	The system automatically saves the stored information according to the user's configuration. The saved data file is named RECORDX.txt, where X is the file number. When a configuration query is made, the current latest file name is displayed.	1. Fixed will have SNCPST protocol and can not be canceled, the protocol for data backup. 2. The system is powered on and the network port side is plugged into the computer for storing data export status.	None

After the system is powered on and the COM2 port displays the startup information, you can input commands such as COM2~COM5 serial port baud rate configuration, serial port protocol and update rate setting, etc. Each command output will return "cmd ok" if successful, otherwise it will display "cmd error ". After the input is finished, type "saveconfig" to save the configuration, and the next reboot will automatically call this configuration, if you don't enter this command, the serial port configuration will be restored to the last saved configuration after the next reboot.

## 2.2、 Configuration queries

Typing "log loglist" or "log rxstatus" through COM2 will list all the configurations of COM2~COM4, including the following:

- Serial port number, serial port baud rate, serial port protocol and update rate.
- Function module open status: including zero speed correction status and smooth processing status, open as enable, close as disable; carrier type;
- Internal storage status information: including the file name of the last file, remaining space, etc;
- Initial binding latitude and longitude;
- System number and factory date;
- Software version number: including preprocessing software version number and navigation software version number;
- Operating mode: including combined navigation (DGI) and pure inertial navigation (INS).

## 2.3、 Baud rate configuration

Enter the following command in this mode to enter the serial port baud rate configuration:

com comX BAUDRATA

Where X is 2~4 and BAUDRATA is the baud rate in bps.

For example, to set the baud rate of COM2 port to 460800bps, enter the following command:

com com2 460800

#### 2.4 、 Serial RS232 configuration

When the configured serial port is RS232 (if the configured serial port is COM3-COM4, you need to do the adapter wire, see section 4.2 Electrical Interface for wiring definition), the command is as follows:

rs232 COMX

where X is 2~4.

For example, to set COM3 port to RS232, enter the following command:

rs232 com3

#### 2.5、 Serial port RS422 configuration

When the configured serial port is RS422 (if the configured serial port is COM2, you need to do an adapter cable, see section 4.2 Electrical Interface for wiring definition), the command is as follows:

rs422 COMX

where X is 2~4.

For example, to set the COM2 port to RS422, enter the following command

rs422 com2

#### 2.6、 Update rate configuration

The configuration of COM2~COM5 and memory file port GPFPD, BDFPD, inspvasa, and inspvasb protocols is performed through COM2 with the following configuration commands:

log comX/file LOG ontime updataTime

where comX can be com2~com4 configuration number, file is the memory interface configuration number; updataTime represents the update time, which can be 5(0.2Hz), 1(1Hz), 0.2(5Hz), 0.1(10Hz), 0.01(20Hz) and other periods that can be 200Hz division, unit s.

LOG indicates the protocol name, which can be inspvasa, inspvasb, gpfpd, bdfpd.

For example, to configure the COM2 port to output 10Hz GPFPD data, enter the following command via COM1:

log com2 gpfpd ontime 0.1

If you need to output 10Hz bdfpd data at COM2 at the same time, then you can enter the following command via COM1 again:

log com2 bdfpd ontime 0.1

As another example, to store the 1Hz inspvasa protocol data in the internal memory of the inertial guide, the following command can be entered via COM2:

log file inspvasa ontime 1

If you want to turn off a protocol, configure the command as follows:

log comX/file LOG off

The configuration of the rawimusb and rawdata protocols for the COM2~COM4 ports and the memory file port is performed via COM2 with the following configuration commands:

log comX/file rawdata onchange

If you want to turn off the rawdata protocol for this serial port, the configuration command is as follows:

log comX/file rawdata off

If you want to disable all protocols on the serial port, the command is as follows:

unlogall comX/file



Note that increasing the update rate or outputting several protocols at the same time, these will increase the amount of data sent by the serial port, and you need to configure the baud rate to match it before using it, otherwise it may cause lost numbers. In general, the larger the amount of data, the higher the baud rate required.

#### 2.7、 Initial value latitude and longitude configuration

Initial latitude and longitude configuration, the configuration command is

`initialpos LONGITUDE LATITUDE`

where LONGITUDE and LATITUDE are the configured local latitude and longitude values, in degrees.

#### 2.8、 Function module configuration

The function modules with on configuration mainly include zero speed correction and output position smoothing.

##### 2.8.1、 "Zero speed correction" configuration

Zero speed correction function mainly refers to the inertial guide to detect the sensitive information, if the inertial guide is judged to be zero speed, then make the corresponding correction.

If the satellite information is invalid for a long time in the combined navigation state, and the user wants to get pure inertial navigation information, it is recommended to turn off the zero speed correction mode.

The zero speed correction configuration command is as follows:

`inszupt switch`

The switch value is disable or enable, where disable means turn off the function and enable means turn on the function.

##### 2.8.2 、 "Position output smoothing" configuration

The position information in the INSPVASA and GPFPD protocols is inertial navigation position information, in order to get smoother position information, the navigation software has added the position output smoothing function, the smoothed position noise is smaller.

The default "position output smoothing" in the combined navigation process is off, but for the convenience of the user, this function can be configured with the following command:

`possmooth SWITCH`

The switch value is disable, enable, where disable means turn off the function, enable means turn on the function.

#### 2.9、 Satellite serial port mapping configuration

In the process of use, if the satellite card does not have extra serial ports for configuration or use, you can use the satellite card serial port mapping to the external interface COM4, which is configured with two commands as follows:

`connect gpocard com2`

`connect gpocard com3`

`connect gpocard disable`

Send `connect gpocard com2` command, it will map COM2 of satellite card 718D to COM4 of external connection port, then COM4 port must be configured as 230400 to configure satellite navigation card board, this command will make inertial guidance work in abnormal state, after configuring the board, you need to reboot inertial guidance, then inertial guidance can be normal state. This command will make the inertial guidance work in an abnormal state, and the inertial guidance will not be saved after the reboot.

Send `connect gpocard com3` command to map COM3 of satellite card 718D to COM4 of external connection port, at this time, COM4 port baud rate must be configured to COM3 of 718D for normal communication, if you need to save, send `saveconfig` command.

Sending the `connect gpocard disable` command will restore the external COM4 serial port to the internal CPU output port.

## 2.10、Carrier type configuration

According to the different carriers installed in the inertial guidance, the carrier type configuration is required, and for different carrier types, different algorithms are processed within the system.

The configuration commands are as follows:

carrier vehicle/ship/air

In order, they are vehicle, ship and airborne.

After the configuration is complete, you need to enter the save command saveconfig, and then hard start or enter the #reset command, the carrier type configuration will be valid after the start. The inertial guide does not support the current configuration for current use during use, it must be restarted.

After the carrier type is configured as vehicle type, the inertial guide is required to be installed on the vehicle and fixed, and the inertial guide is oriented in the same direction as the front of the carrier vehicle, with an error of not more than 10 degrees.

## 2.11 、Online RTK

When using online RTK processing, you need com2 to enter the following commands.

possmooth disable

com5, the com1 port of the 718D, is configured as follows

serialconfig com1 9600 (variable baud rate, according to the actual DTU configuration)

interfacemode com1 rtmv3 novatel on

Saveconfig

## 2.12、GNSS antenna pole arm configuration

Depending on the relative mounting relationship between the antenna and the inertial guide, an antenna rod arm configuration is required. The value of the rod arm between the configured inertial guide to the antenna must be measured to the nearest millimeter (mm), any rod arm measurement error will go directly into the position error of the inertial guide output, when installed and used, the inertial guide is as close as possible to the main antenna, especially in the horizontal position. This command is required before the inertial guide is aligned with the static base or in the middle and before the dynamic base is aligned. Once this configuration is complete, it needs to be saved via "saveconfig".

The configuration includes the master antenna arm configuration and the slave antenna arm configuration.

The master antenna configuration command is as follows:

setimutoantoffset1 armX armY armZ

The configuration commands from the antenna are as follows:

setimutoantoffset2 armX armY armZ

where armX, armY and armZ are the configured pole arm values in meters, representing the component of the vector from the inertial guide to the antenna phase center within the inertial guide vector coordinate system, which is chosen to be right front up (XYZ). For the example in Figure 5, armX and armY should have negative values and armZ should have positive values.

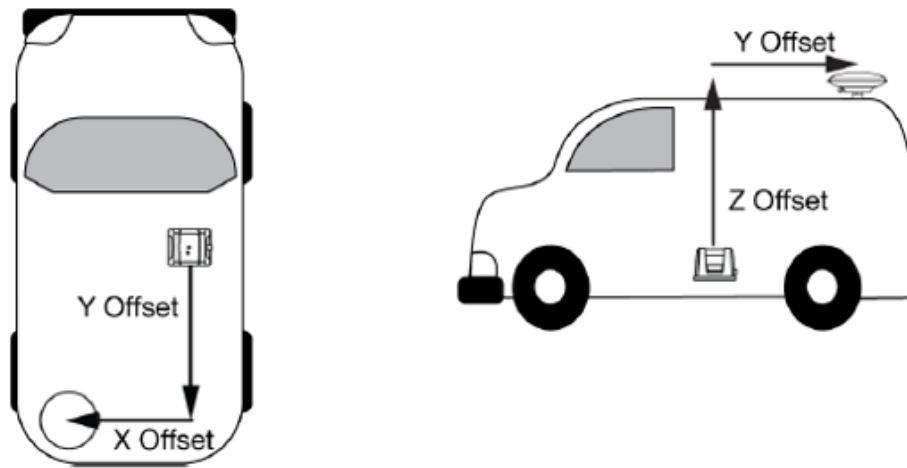


Figure 4 Schematic diagram of the antenna pole arm

### 2.13 、 Output lever arm setting

The default value for the product output lever arm configuration is  $[0, 0, 0]$  (upper right front), which is the position and velocity value at the output inertial guide. If you need to output the position and velocity of the user's test point, you need to set the output lever arm according to the relative mounting relationship between the test point and the inertial guide.

The bar arm value between the configured inertial guide and the test point must be measured to the nearest millimeter (mm) and any bar arm measurement error will go directly into the position error of the inertial guide output. This command is required before the inertial guide's static base is aligned or before the inertial guide's dynamic base is aligned. Once this configuration is complete, it needs to be saved via "saveconfig".

The output lever arm configuration command is as follows:

setimutosensoroffset armX armY armZ

Where armX, armY and armZ are the configured bar arm values in meters, representing the vector from the inertial guide to the test point as a component within the inertial guide vector coordinate system, which is chosen to be right front up (XYZ). Figure 6 example, armY, armZ should be positive values.

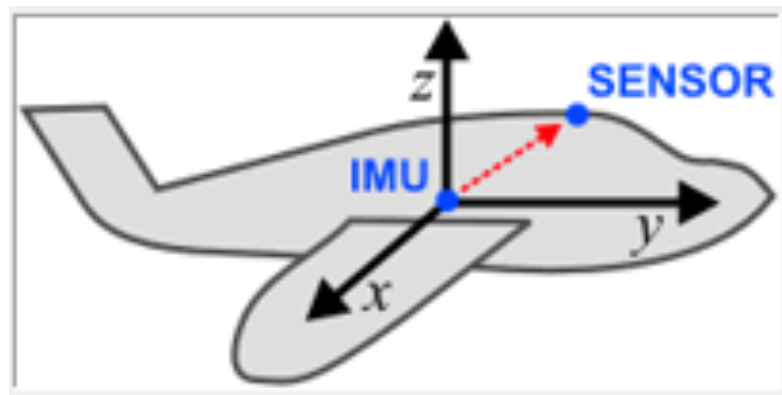


Figure 5 Schematic diagram of output lever arm

### 2.14 、 Mounting angle setting

### 2.10、 Mounting angle setting

Both the attitude and heading information output by the product are the Euler angles of the product coordinate system with respect to the geographic coordinate system. The angular mounting relationship between the product and

the carrier coordinate system is the mounting angle, and the configuration default value is [0, 0, 0] (pitch, heading, roll), which means that the product coordinate system is considered to overlap with the mounting carrier coordinate system. If there is a mounting angle for the product installed on the carrier, and the product is required to output the Euler angle of the carrier coordinate system relative to the geographic coordinate system, the mounting angle should be set according to the relative mounting relationship between the product and the carrier.

The installation angle configuration command is as follows:

vehiclebodyrotation angleX angleZ angleY

where angleX, angleZ, and angleY are configured mounting angle values in degrees, representing the angle from the carrier coordinate system to the combined navigation system coordinate system in the order of pitch, heading, and roll.

Note: This function will cause the output angular velocity, acceleration, and attitude to change with the settings.

### 3 、 Protocol format

The output protocols supported by the product are shown in the following table.

Table 5 Description of output data protocols

Serial number	Data Protocol Name	Protocol Type	Output Type	Support Interface
1	sncnavptb	Binary	ontime	COM2-COM4
2	gpfpd	ASCII	ontime	COM2-COM4
3	bdfpd	ASCII	ontime	COM2-COM4
4	inspvasa	ASCII	ontime	COM2-COM4
5	inspvash	Binary	ontime	COM2-COM4
6	rawimusb	Binary	onchanged	COM2-COM4
7	rawdata	Binary	onchanged	COM2-COM4

#### 3.1、 SNCNAVPVTB

Example of inertial configuration command:

log com2 sncnavptb ontime 1

Table 6 sncnavptb format

Byte Serial Number	Data	Data Type	Number of occupied bytes	Description
0	0x55	unsigned char	1	Fixed 0x55
1	0xAA	unsigned char	1	Fixed 0xAA
2	Class	unsigned char	1	Fixed 0x00
3	ID	unsigned char	1	Fixed 0x00
4-5	Frame Length	unsigned short	2	
6-7	Frame count	unsigned short	2	Add 1 for each frame sent
8-9	Week(GPS time)	unsigned short	2	Unit is the first few weeks
10-17	Weeks and seconds (in GPS time)	double	8	Unit is S
18-21	Heading	int	4	Units in degrees LSB=0.0001°
22-25	Pitch	int	4	Units in degrees LSB=0.0001°
26-29	Scrolling	int	4	Units in degrees LSB=0.0001°

30-33	East Speed	int	4	Units in degrees LSB=0.0001 m/s
34-37	North Speed	int	4	Units in degrees LSB=0.0001 m/s
38-41	Sky speed	int	4	Units in degrees LSB=0.0001 m/s
42-45	Latitude	int	4	Units in degrees LSB=0.0000001°
46-49	Longitude	int	4	Units in degrees LSB=0.0000001°
50-53	Altitude	int	4	Unit is meter LSB=0.0001m
54-57	X-axis angular velocity(right-front-up)	int	4	Units in degrees LSB=0.000001°/s
58-61	Y-axis angular velocity (right-front-up)	int	4	Unit in degrees/second LSB=0.000001°/s
62-65	Z-axis angular velocity (right-front-up)	int	4	Unit in degrees/second LSB=0.000001°/s
66-69	X-axis acceleration (right-front-up)	int	4	Unit is m/s <sup>2</sup> LSB=0.0000001 m/s <sup>2</sup>
70-73	Y-axis acceleration(right-front-up)	int	4	Unit is m/s <sup>2</sup> LSB=0.0000001 m/s <sup>2</sup>
74-77	Z-axis acceleration (right-front-up)	int	4	Unit is m/s <sup>2</sup> LSB=0.0000001 m/s <sup>2</sup>
78	Master antenna positioning stars	unsigned char	1	The unit is a grain LSB=1
79	Slave antenna positioning stars	unsigned char	1	The unit is a grain LSB=1
80	Navigation status word	unsigned char	1	Bit7-Bit0 0x00: Standby 0x10: Coarse alignment 0x20: Fine alignment 0x30: Combined navigation 0x31: Pure inertial navigation
81-82	GNSS Status Word	unsigned short	2	Bit2-Bit0 =0: invalid =1: single point positioning =2: pseudo-range differential =3: RTK differential positioning Bit3: Position velocity data is valid =0: invalid =1: valid Bit4: GNSS dual antenna heading is valid =0: invalid =1: valid Bit5: GPS time data is valid =0: invalid =1: Valid Bit6-Bit15: Reserved for 0
83-84	Fault Status Word	unsigned short	2	Bit0: X-axis gyro fault word =0: normal =1: Fault Bit1: Y-axis gyro fault word =0: Normal =1: Fault Bit2: Z-axis gyro fault word =0: normal =1: Fault Bit3: X-axis acceleration fault word

				=0: Normal =1: Fault Bit4: Y-axis acceleration fault word =0: Normal =1: Fault Bit5: Z-axis acceleration fault word =0: Normal =1: Fault Bit6: GNSS board hardware fault word =0: Normal =1: Fault Bit7-Bit15: Reserved for 0
85-92	Reserved	-	8	-
93-94	Checksum	-	2	2-92 Accumulation takes the lower 16 bits

### 3.2 、GPFPD

Example of inertial configuration command:

log com2 gpfpd ontime 1

Example of inertial guidance output

\$GPFPD,2083,199022.049,271.356,-2.149,0.767,39.7085178,116.1311212,39.93,-11.422,-0.077,0.050,1.500,27,0,1\*59

Table 4 GPFPD format

Serial number	Name	Meaning	Data Type	Unit
1	\$GPFPD	Format header	—	—
2	GPSWeek	Current number of weeks since 1980-1-6 to present (GMT)	Integer	—
3	GPS circumsecond	GPS week seconds	Floating point	s
4	Yaw angle	Yaw angle 0~360 degrees, clockwise	Floating-point	°
5	Pitch angle	Pitch angle-90 degrees~90 degrees	Floating-point	°
6	Roll angle	Roll angle-180 degrees~180 degrees	Floating-point	°
7	Latitude	Inertial guidance output latitude -90 degrees ~ 90 degrees	Floating-point	°
8	Longitude	Longitude of inertial guidance output-180 degrees~180 degrees	Floating Point	°
9	altitude	Inertial guidance output altitude	Floating Point	m
10	East speed	Inertial guidance output east speed	Floating Point	m/s
11	North speed	Inertial guidance output north speed	Floating Point	m/s
12	Sky speed	Inertial guide output sky speed	Floating Point	m/s
13	Baseline length	Two satellite antenna center distance	Integer	m
14	NSV1	Antenna 1 satellite number	Integer	PCS
15	NSV2	Antenna 2 satellites	Integer	PCS
16	Satellite Status	Satellite status 0: not available, 1: available	Integer	—
17	Checksum	Check code	Hexadecimal	—
18	<CR><LF>	Fixed packet tail	—	—

### 3.3 、BDFPD

Example of inertial configuration command:

log com2 gpfpd ontime 1

Example of inertial guidance output

\$BDFPD,2105,355160.246,90.96184,-1.14427,1.01899,39.71066564,116.11209956,46.076,-0.0037,-0.0065,0.0147,20,16,0\*68

Table 5 BDFPD format

Serial number	Name	Meaning	Data Type	Unit
1	\$BDFPD	Format header	—	—
2	GPSWeek	Current week number since 1980-1-6 to present (GMT)	Integer	—
3	GPS circumsecond	GPS week seconds	Floating point	s
4	Yaw angle	Yaw angle 0~360 degrees, clockwise	Floating-point	°
5	Pitch angle	Pitch angle-90 degrees~90 degrees	Floating point	°
6	Roll angle	Roll angle-180 degrees~180 degrees	Floating-point	°
7	Latitude	Inertial guidance output latitude -90 degrees ~ 90 degrees	Floating Point	°
8	Longitude	Longitude of inertial guidance output-180 degrees~180 degrees	Floating Point	°
9	altitude	Inertial guidance output altitude	Floating Point	m
10	East speed	Inertial guidance output east speed	Floating Point	m/s
11	North speed	Inertial guidance output north speed	Floating Point	m/s
12	Sky speed	Inertial guidance output sky speed	Floating-point	m/s
13	NSV1	Antenna 1 satellite number	Integer	PCS
14	NSV2	Antenna 2 satellites	Integer	PCS
15	Positioning type	pos type in bestpos	Integer	—
16	Orientation Type	Pos type in heading	Integer	—
17	Checksum	Checksum	Hexadecimal	—
18	<CR><LF>	Fixed packet tail	—	—

### 3.4 、Short Message Protocol Header

There are two types of short header protocol headers, one is ASCII and the other is binary.

#### ASCII short header

Serial number	Name	Data Type	Meaning
1	%	Char	Fixed to '%'
2	Message name	Char	Message type for this protocol
3	GPS Week	Ushort	GPS weeks (in GPS time)
4	GPS Week Seconds	float	GPS Week Seconds (GPS time)

#### Binary short header

Serial number	Name	Data Type	Meaning	Binary Bytes	Binary Offset
1	Synchronized Bytes	Char	Fixed Hex 0xAA	1	0
2	Synchronized bytes	Char	Fixed Hex 0x44	1	1
3	Synchronization bytes	Char	Fixed Hex 0x13	1	2
4	Message Length	Uchar	Message length, without header and	2	3

Serial number	Name	Data Type	Meaning	Binary Bytes	Binary Offset
			CRC checksum		
5	Message ID	Ushort	Message ID	2	4
6	GPS Week	Ushort	GPS weeks (at GPS)	4	6
7	GPS Week Seconds	Int	GPS week seconds (in GPS time, in milliseconds)	4	8

### 3.5、32-bit CRC checksum

The C code history is as follows

```
#define CRC32_POLYNOMIAL 0xEDB88320L
/* -----
Calculate a CRC value to be used by CRC calculation functions.
----- */
unsigned long CRC32Value(int i)
{
    int j;
    unsigned long ulCRC;
    ulCRC = i;
    for (j = 8; j > 0; j--)
    {
        if (ulCRC & 1)
            ulCRC = (ulCRC >> 1) ^ CRC32_POLYNOMIAL;
        else
            ulCRC >>= 1;
    }
    return ulCRC;
}
/* -----
Calculates the CRC-32 of a block of data all at once
ulCount - Number of bytes in the data block
ucBuffer - Data block
----- */
unsigned long CalculateBlockCRC32(unsigned long ulCount, unsigned char*ucBuffer)
{
    unsigned long ulTemp1;
    unsigned long ulTemp2;
    unsigned long ulCRC = 0;
    while (ulCount-- != 0)
    {
        ulTemp1 = (ulCRC >> 8) & 0x00FFFFFFL;
        ulTemp2 = CRC32Value(((int) ulCRC ^ *ucBuffer++) & 0xFF);
        ulCRC = ulTemp1 ^ ulTemp2;
    }
    return(ulCRC);
}
```

### 3.6、INSPVAS

The command is short message protocol output

Example of inertial configuration command:

log com2 inspvasa ontime 1 (ASCII)



log com2 inspvash ontime 1 (binary)

ASCII example

%INSPVASA,1264,144059.000;1264,144059.002135700,51.116680071,-  
 114.037929194,515.286704183,277.896368884,84.915188605,-8.488207941,0.759619515,-  
 2.892414901,6.179554750,INS\_ALIGNMENT\_COMPLETE\*855d6f76

#### INSPVAS format

Serial number	Name	Meaning	Data Type	Binary Byte	Binary Offse
1	INSPVAS Header	Message header	—	H	0
2	Week	GPS Week (in GPS time)	Ulong	4	H
3	Seconds	GPS Week Seconds (GPS time)	Double	8	H+4
4	Latitude	Latitude (WGS84) [degrees]	Double	8	H+12
5	Longitude	Longitude (WGS84) [degrees]	Double	8	H+20
6	Height	Height above mean sea level [metres]	Double	8	H+28
7	North Velocity	Northward velocity (negative values indicate a southward direction) [m/s]	Double	8	H+36
8	East Velocity	Eastward velocity (negative values indicate a westward direction) [m/s]	Double	8	H+44
9	Up Velocity	Skyward velocity [m/s]	Double	8	H+52
10	Roll	Roll [degrees]	Double	8	H+60
11	Pitch	Pitch [degrees]	Double	8	H+68
12	Azimuth	Heading angle (0-360) [degrees]	Double	8	H+76
13	Status	Inertial guidance status word	Enum	4	H+84
14	xxxx	32-bit CRC	Hex	4	H+88
15	[CR][LF]	Fixed endings (ASCII only)	-		—

#### Inertial guidance state

Binary	ASCII	Meaning
0	INS_INACTIVE	Inertial guidance ready state
1	INS_ALIGNING	Inertial Guidance Alignment State
3	INS_SOLUTION_GOOD	Inertial guidance combined navigation state
6	INS_SOLUTION_FREE	Inertial guidance pure inertial state

### 3.7 、RAWIMUS

This command is short message protocol output (output binary only)

Example of inertial configuration command:

log com2 rawimusb onchanged (binary)

#### RAWIMUS format

Serial number	Name	Meaning	Data Type	Binary Byte	Binary Offse
1	RAWIMUS Header	Message header	—	H	0
2	Week	GPS Week (in GPS time)	Ulong	4	H
3	Seconds	GPS Week Seconds (GPS time)	Double	8	H+4
4	IMU Status	IMU status word	Hex Ulong	4	H+12
5	Z Accel Output	Fixed 200HZ, divided by 250000.0 to Z acceleration m/s2 (right-front-up)	Long	4	H+16

Serial number	Name	Meaning	Data Type	Binary Byte	Binary Offse
6	-(Y Accel Output)	Fixed 200HZ, divided by -250000.0 becomes Y acceleration m/s <sup>2</sup> (right-front-up)	Long	4	H+20
7	X Accel Output	Fixed 200HZ, divided by 250000.0 becomes X acceleration m/s <sup>2</sup> (right-front-up)	Long	4	H+24
8	Z Gyro Output	Fixed 200HZ, divided by 5000000.0 becomes Z angular velocity rad/s (right-front-up)	Long	4	H+28
9	-(Y Gyro Output)	Fixed 200HZ, divided by -5000000.0 becomes Y angular velocity rad/s (right-front-up)	Long	4	H+32
10	X Gyro Output	Fixed 200HZ, divided by 5000000.0 becomes X angular velocity rad/s (right-front-up)	Long	4	H+36
14	xxxx	32-bit CRC	Hex	4	H+40
15	[CR][LF]	Fixed endings (ASCII only)	-		—

## Raw IMU scale

IMU Type	Gyro	Acceleration
ISA-100C	1.0E-9 rad/LSB	2.0E-9 m/s/LSB

## 3.8 、RAWDATA

The protocol is a collection of protocols, which includes the inertial guidance internal group IMU raw data RAWIMUSB (200HZ) protocol and the BESTPOSB (1HZ), BESTVELB (1HZ), PSRDOPB (1HZ), HEADINGB (1HZ), RANGECPMB (satellite Navigation raw data option) protocol.

Example of inertial guidance configuration commands:

log com2 rawdata onchanged

## 4、Data export

This product has data storage function, total storage space 16G (internal will contain system recovery partition and other files used by the system, so it will be less than the normal empty SD card). The system automatically saves the storage information according to the user's configuration. The saved data folder is named recordX, where X is the file number (the maximum is 39), and the number increases sequentially. When X is 39, the next storage will automatically overwrite record00, and X will still increase sequentially in the next storage. If the system is configured to store data state, the system will automatically delete the earliest data folder after each power-on operation, for example, if the current generated file is record08, there will be no record09 folder in the system memory. Users can use this as a basis to find the latest data file. In addition, the current latest file name is also displayed when a configuration query is made.

The recordX folder contains each protocol file configured by the user, and each protocol is a separate file with the protocol name.

The data export operation is as follows:

- Connect the Ethernet interface to the test computer;
- Set the IP address of the test computer to 192.168.1.22;
- Power up the system;
- Run the SSH software (SSH Secure File Transfer Client);
- Click Quick Connect and fill in the contents as shown in Figure 4;

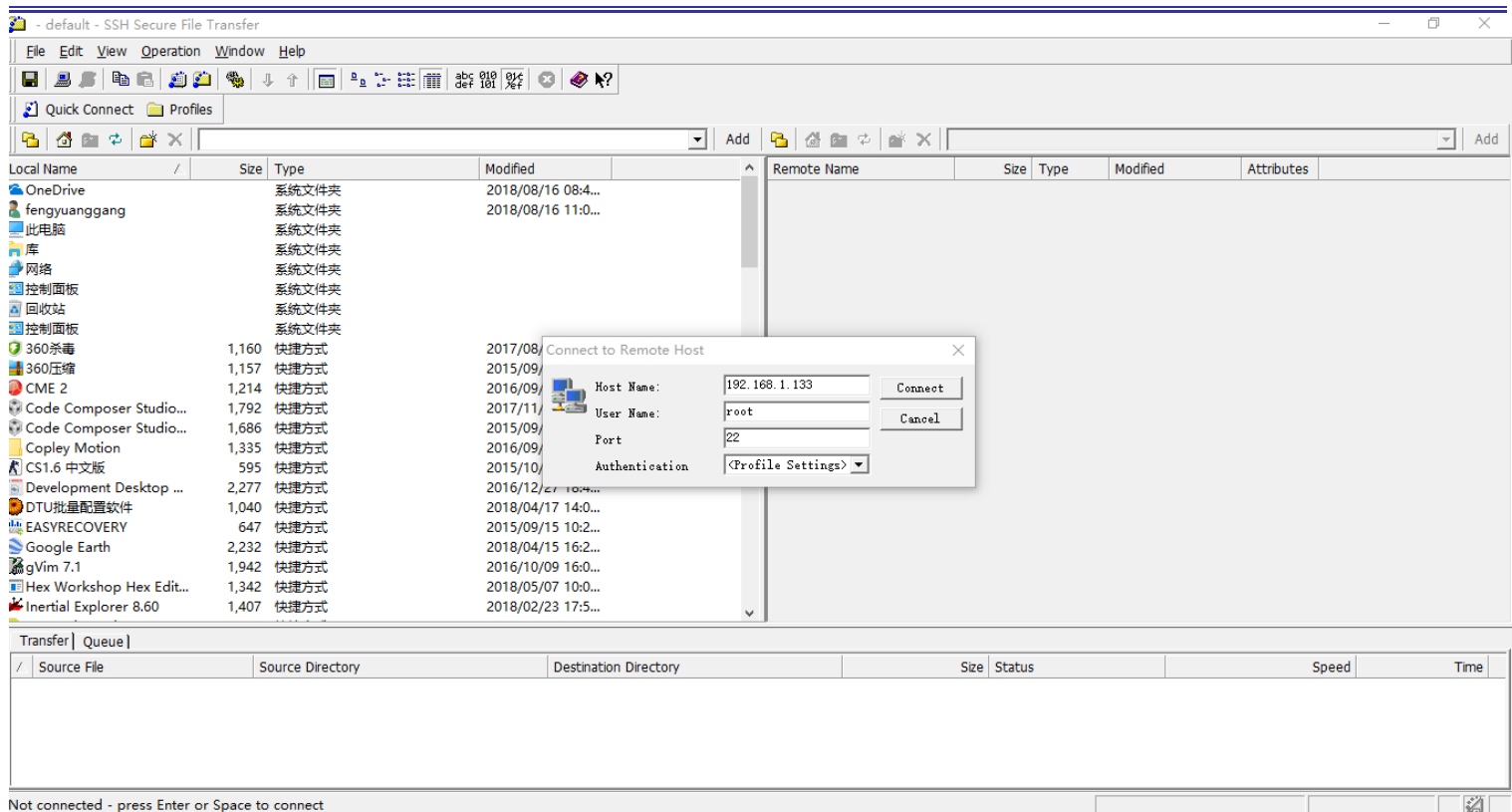


Figure 4 SSH software connection diagram

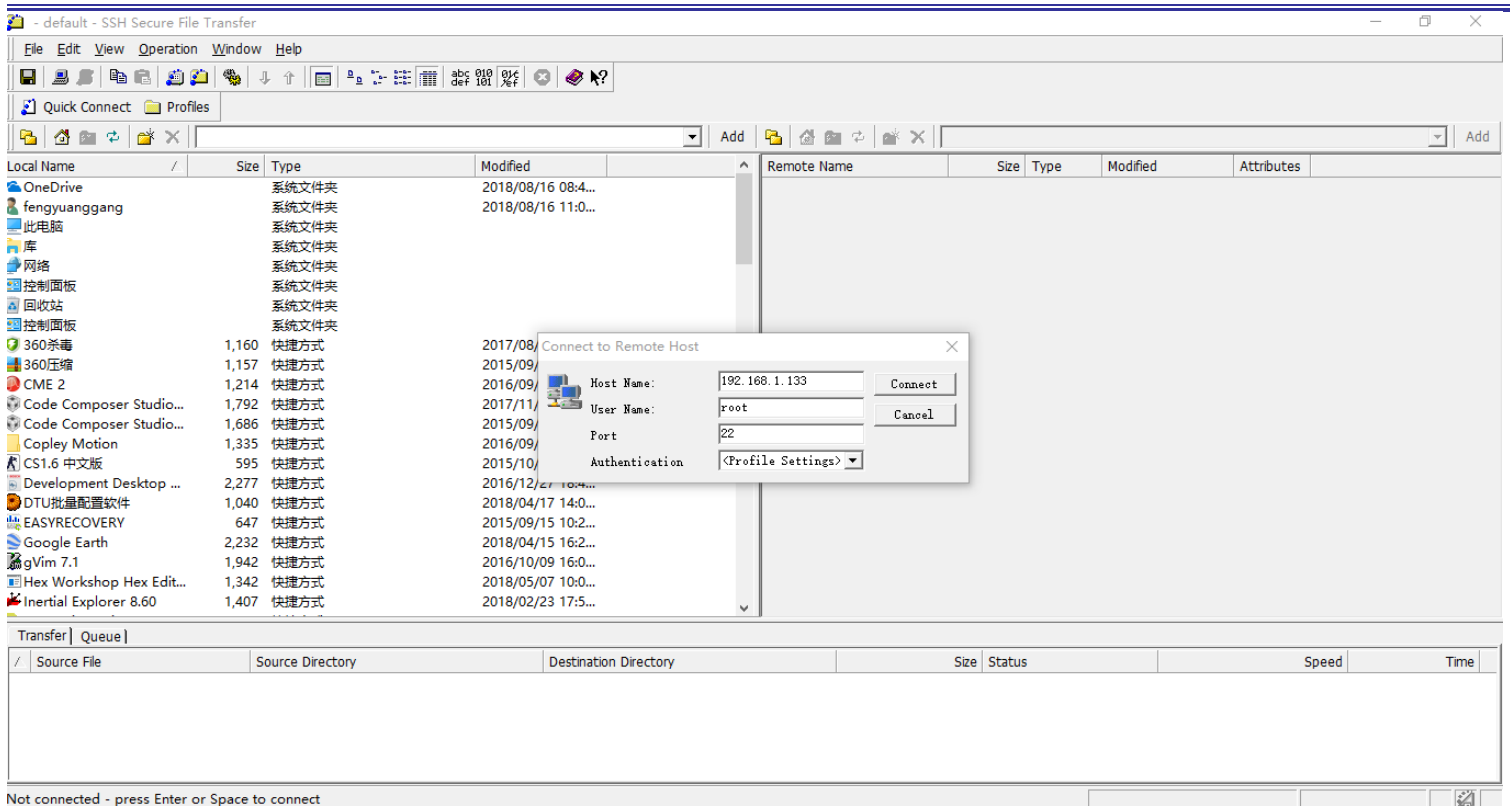
- Click Connect, the SSH software will automatically pop up the "Enter Password" dialog box, no need to fill in the password, click OK to connect to the system;
- Type /media/mmcblk0p1 in the address bar on the right side of the above figure and enter, and find the corresponding storage directory in the directory below to download.
- After the download operation is completed, the system is powered off and the Ethernet interface is unplugged.

## SYSTEM MAINTENANCE

### 1、Firmware Upgrade

Operation steps are as follows:

- Connect the inertia guide COM1 and network port to the computer, and set the computer network port IP port to 192.168.1.22;
- open the host computer software CRT, open the corresponding serial port, serial port settings for baud rate 115200, 8-bit data, 1-bit stop bit, no parity bit;
- power on the combined navigation system;
- Observe the CRT display, wait for the Linux boot to complete, enter the command \$GPEXT, a command line will appear.
- Run SSH software (SSH Secure File Transfer Client), click Quick Connect and fill in the content as shown below.



- Click Connect, SSH software automatically pop-up "Enter Password" dialog box, no need to fill in the password, click OK, connect to the system;
- Type `/home/root/install` in the address bar on the right side of the above figure and enter, delete the files `snc300_dgi`(linux application), `snc300_dgi_dsp.out`(DSP program), `snc300imu.bin`(FPGA program), and copy the new `snc300_dgi`, `snc300_dgi_dsp.out`, `snc300imu.bin`, `snc300_dgi.bin` and `snc300imu.bin`, `snc300_dgi_dsp.out`, `snc300imu.bin` files, you need to select change the three files in the right-click properties, change the permission to 777, and then enter the sync command in COM1 to synchronize the files.
- If you need to upgrade the FPGA program, you need to send `/home/root/update_fpga.sh` from COM1, and wait for COM1 to prompt the upgrade success.
- The product reboot that the upgrade is completed.

## PRECAUTIONS

The main precautions are as follows:

- the inertial guidance system power-on and power-off time interval is not less than 30s, otherwise it is easy to cause damage to inertial devices;
- in the handling, installation and use process, should be lightly held and placed to avoid bumping, dropping and impact;
- after the inertial guide is turned on, you need to wait for the inertial guide to complete coarse alignment before linear motion, coarse alignment time of about 1min, otherwise affect the measurement accuracy;
- carrier type configuration for the vehicle type, the inertial guide is required to be installed in the car fixed, and the inertial guide direction and the direction of the front of the carrier car, the error is not more than 10 degrees.

## APPENDIX

### 1、 combined navigation system satellite receiver COM2, COM3 output configuration

The combined navigation system receives satellite navigation information through the port of the built-in satellite receiver. The COM2 port of the satellite receiver is configured with the following command:

```
unlogall com2
```

```
serialconfig com2 460800
```

```
log com2 headingb onchanged
```

```
DUALANTENNAALIGN enable 5 5
```

```
log com2 psrdopb ontime 1
```

```
log com2 bestposb ontime 0.2
```

```
log com2 bestvelb ontime 0.2
```

```
log com2 timeb ontime 1
```

```
log com2 rangecmpb ontime 1 (note: without raw number card, this command is invalid)
```

```
frequencyout enablesync 100000 1000000000
```

```
saveconfig
```

Which if you want to use the COM3 of the satellite card can refer to section 4.3.2.7, but you need to configure the following command to turn the satellite card multiplex pin into serial COM3.

```
interfacemode usb1 none none
```

```
interfacemode usb2 none none
```

```
interfacemode usb3 none none
```

```
MARKCONTROL MARK1 DISABLE
```

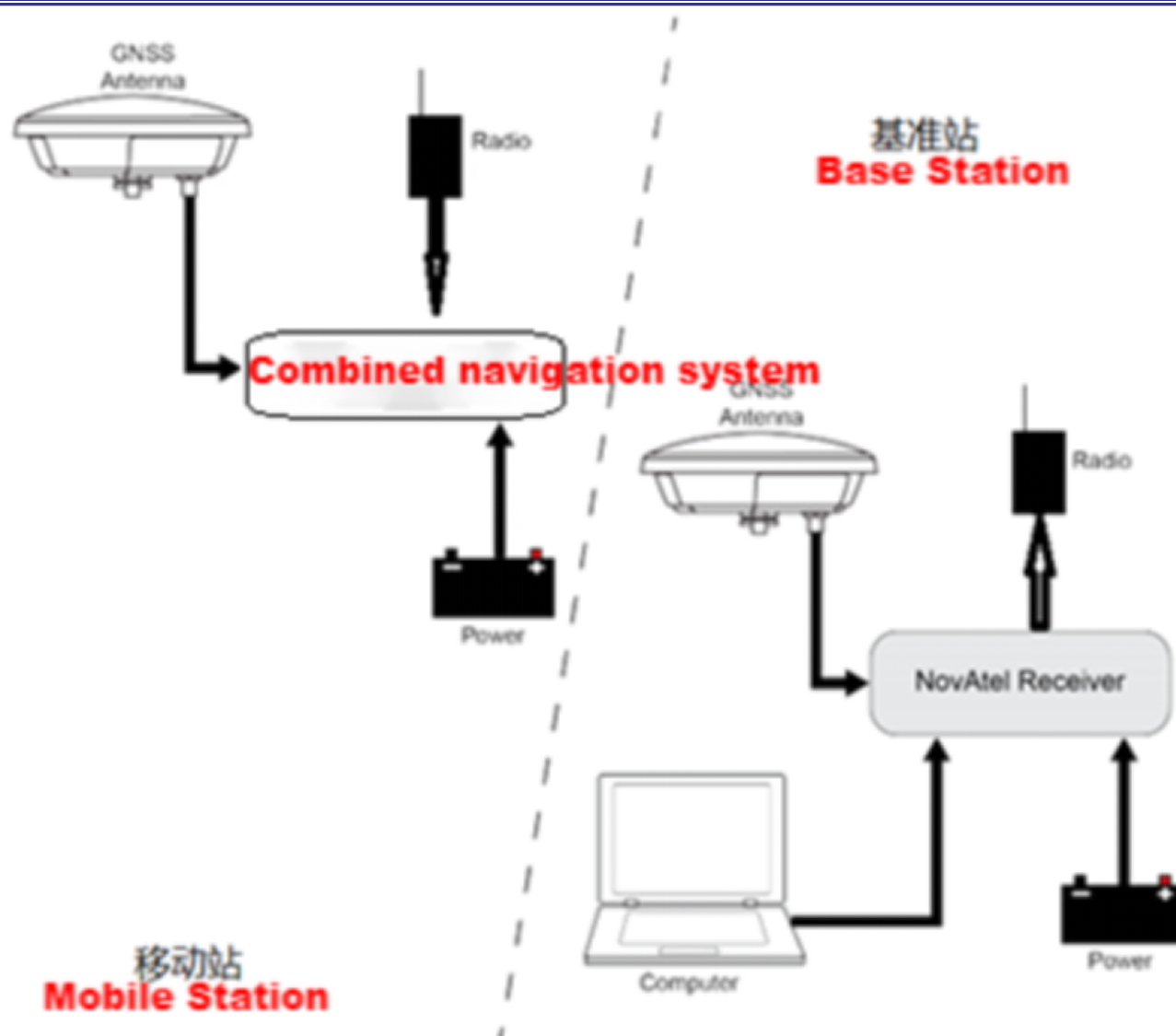
```
interfacemode com3 novatel novatel
```

```
serialconfig com3 115200 (Note: Baud rate can be set to the baud rate you want to use, but the inertial guide COM4 port needs to be consistent with the baud rate here)
```

```
Saveconfig
```

### 2 、 Differential configuration description

The combined navigation system can receive the differential correction information sent by the reference station through the communication link and work in the differential state to achieve the centimeter-level positioning accuracy. The differential configuration mainly includes 3 parts: 1) reference station setting; 2) communication link setting; 3) mobile station setting. The data link is shown in the figure below.



## 2.1 、 Reference station setting

Differential reference station is the satellite receiver antenna installed in a fixed position, the satellite receiver in the use of the process, need to ensure that the antenna position is fixed. The differential reference station sends the precise coordinates of the fixed position and the received satellite information to the mobile station (the point to be positioned) through the communication link, which is used for the mobile station to carry out differential positioning solution to realize differential high-precision positioning and achieve centimeter-level positioning accuracy.

The reference station can apply NovAtel-718D satellite receiver board and configure it as the reference station mode. The specific configuration commands are as follows, and detailed instructions are provided in the NovAtel-718D user manual.

Table 14 Base station configuration commands

Serial number	Instruction	Description
1	fix position 39.8122 116.1515 60.5	Set the known precision coordinates (latitude 39.8122, longitude 116.1515, altitude 60.5) as the reference station coordinate values
	posave on 0.01 1.5 2.5	Receiver autonomous positioning 0.01h; or when the standard deviation of

Serial number	Instruction	Description
		horizontal positioning $\leq 1.5\text{m}$ and the standard deviation of altitude positioning $\leq 2.5\text{m}$ , the average value of positioning is used as the coordinate value of the reference station
2	serialconfig com1 9600	Set the output baud rate of the reference station output interface COM1 to 9600bps
3	interfacemode com1 none rtmv3 off	Configure COM1 input data type as novatel, output data type as rtmv3, and enable command feedback
4	log com1 rtm1075 ontime 1	GPS Differential Messages
5	log com1 rtm1125 ontime 1	BDS Differential Messages
6	log com1 rtm1085 ontime 1	GLO Differential Messages
7	log com1 rtm1033 ontime 10	Receiver and Antenna Description
8	log com1 rtm1005 ontime 10	RTK Base Station Antenna Reference Point Coordinates
9	saveconfig	Save Configuration

## 2.2 、 Communication link setting

The communication link can use 4G DTU or digital radio, and the coverage area of 4G DTU is the coverage area of network information; the coverage area of digital radio is about 10km due to relevant laws and regulations; the settings of 4G DTU and digital radio can refer to the user manual of corresponding products.

## 2.3、 Mobile station setting

The combined navigation system is a differential mobile station. The mobile station receives differential correction information from the reference station in real time, and receives satellite signals for differential positioning solution to achieve differential high-precision positioning. The combined navigation system supports RTCM and RTCMV3 standard data protocols. The GNSS\_COM1 or GNSS\_COM3 of the combined navigation system can be configured as the receiving interface for differential correction information, and the specific configuration commands are as follows.

Table 15 Mobile station configuration commands

Serial number	Instruction	Description
1	serialconfig com1 9600	Set the input baud rate of mobile station input interface COM1 to 9600bps
2	interfacemode com1 rtmv3 none off	Configure COM1 output data type as novatel, input data type as rtmv3, and enable command feedback
3	saveconfig	Save configuration