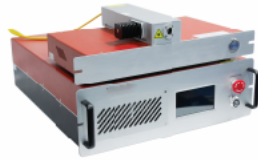




Single Pass DFG Fiber Laser



The product description

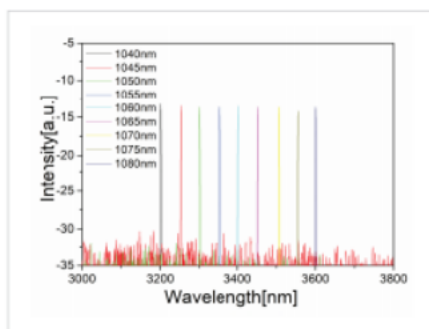
Erbium group offers a single pass SDFG fiber laser (FL-SDFG), which uses ultra narrow linewidth fiber DFB laser as seeds, all fiber amplifiers to boost the output power and single pass PPLN DFG module to get high power mid-infrared laser output. The DFG fiber laser could cover the output wavelengths from 2400 to 4000 nm, with narrow linewidth (less than 200 kHz in 100 us integration time) and excellent beam quality ($M^2 < 1.1$). It remains mode-hopping-free and stable under wide temperature variation and high mechanical vibration, which is great for frequency locking.

Key Features:

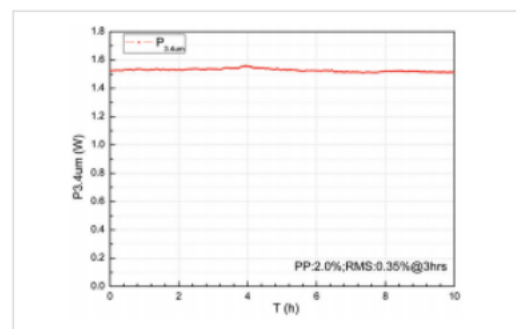
- Narrow linewidth, tunable
- Active power stability
- Stable and maintenance-free
- Good beam quality ($M^2 < 1.1$)
- High output power

Applications:

- Sensing
- Laser spectroscopy
- Gas detection



Wavelength Tuning Range



Power Stability



Technical indicators

| Model | FL-SDFG-XX-YY-ZZ ¹ | | |
|--|--|-----------|-------------------|
| Wavelength Range ² , um | 2.4-4.0 | | |
| Output Power ³ , mW | 0.05-1.5 | | |
| Seed Laser | Precilasers' Fiber DFB Laser | Diode DFB | Wide Tunable Seed |
| Frequency converted | Single Pass DFG | | |
| Tunable Range, nm | >10 | >20 | >400 |
| Linewidth (100us), MHz | <0.2 | 50 | <20 |
| RMS Power Stability, % | <0.5 %@3hrs | | |
| Beam Quality | TEM _∞ , M ² <1.1 | | |
| PER, dB | >20 | | |
| Beam Diameter, mm | 0.7-1.0 | | |
| Cooling | Water Cooling/Air Cooling | | |
| Power Supply | 50-60Hz, 100-240VAC | | |
| <p>1: XX: Central Wavelength, YY: Maximum Output Power, ZZ: Operation Mode</p> <p>2: Central wavelength can be customized</p> <p>3: High power can be customized</p> | | | |

Structure size

